

# VENT SYSTEMS VENTILATED CAVITY BATTEN VB20 ROOF

## DESCRIPTION

The VENT SYSTEMS VB20 is a Polypropylene Ventilated Batten designed to facilitate passive airflow in the roof void, reducing the risk of moisture build up and condensation.

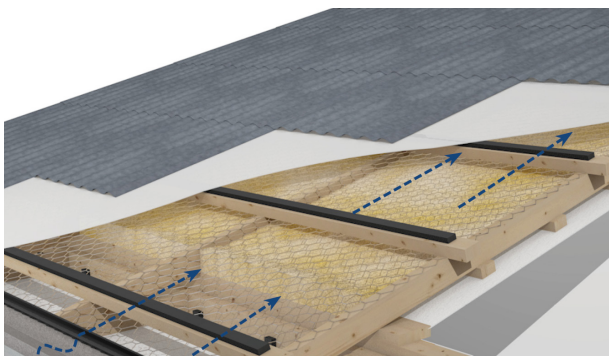
## FEATURES

- Convenient peel-off adhesive backing eliminates the need for nails or glue.
- Insect proof - 4mm vents prevent ingress of nesting insects.
- Provides passive airflow of up to 16,000mm<sup>2</sup> per linear metre.
- Easy to install - manufactured in 1800mm lengths for easy handling.
- Strong and durable - when used as a vented batten on top of roofing battens, the VENT SYSTEMS VB20 has been upgraded in strength and tested to exceed foot traffic weight requirements on the roof above.
- Can be cut down to create 10mm and 15mm cavities if required. *Note: for every 5mm reduction 4,000mm<sup>2</sup> of airflow is lost.*
- Also suitable for use in the wall cavity.

## SCOPE OF USE

- In accordance with BS5250, Suitable for roof pitches of any degree pitch.
- In accordance with NCC 2019 Building Code of Australia, Vol 2, Part 3.8.7.4.b, Suitable for traditional and cathedral roofs of any degree pitch.

**Fig A: Application on Roof Battens**



- In accordance with Guide for Control of Condensation and Mould in Tasmanian Homes (CBOS vs 2), suitable for traditional and cathedral roofs of any degree pitch.
- To be used in accordance with AS4200.2:2017.
- To be used in accordance with Guide for Control of Condensation and Mould in Tasmanian Homes (CBOS vs 2), suitable for traditional and cathedral roofs of any degree pitch.
- For use as non-structural roof battens.
- Commercial and residential application.
- To be used as part of proprietary ventilation system.

## APPRAISALS

- BRANZ appraisal No. 979 [2017].

## WARRANTY

- 30 years.

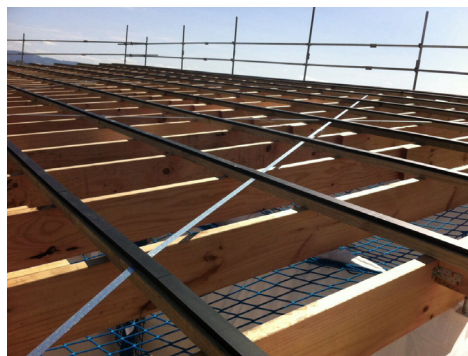
## MAINTENANCE

- No maintenance requirements.

## INSTALLATION

1. Peel-off adhesive backing for temporary fixing.
2. Can be cut with a knife, cutting tool or hand saw.
3. Cladding fixings must be fixed through the VENT SYSTEMS VB20 into the roof battens. NB: The VB20 should be treated as non-structural timber cavity batten.
4. Roof cladding fixings must conform to manufacturer's specifications.

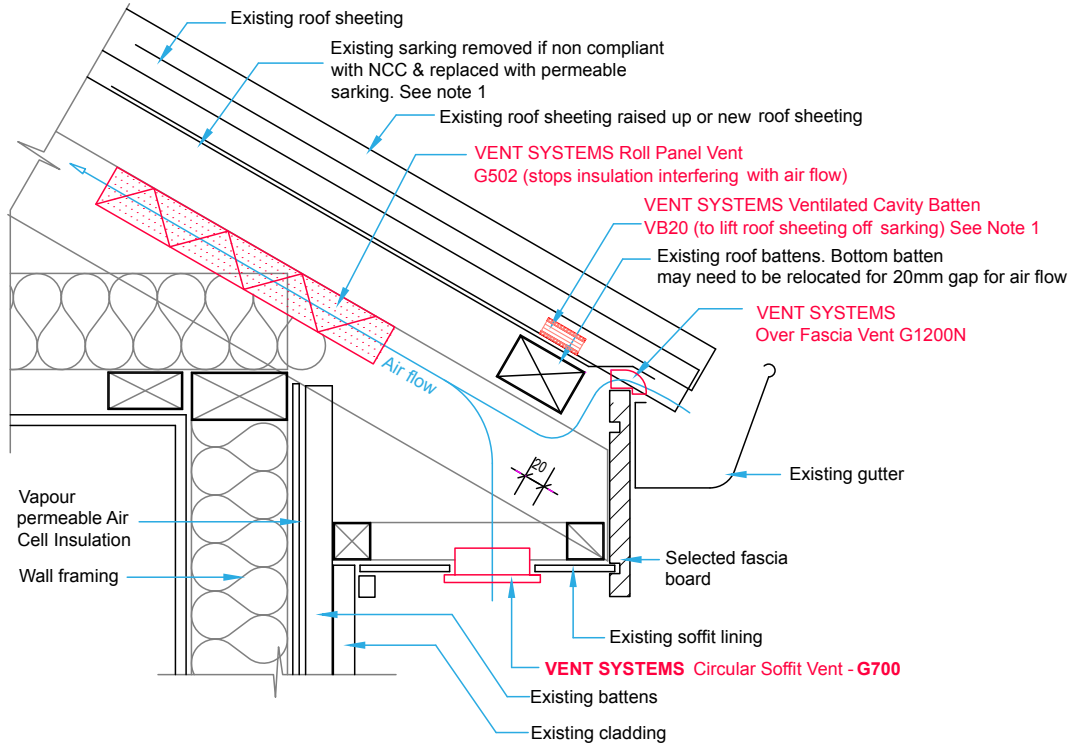
**Fig B: Application on Cathedral Roof**



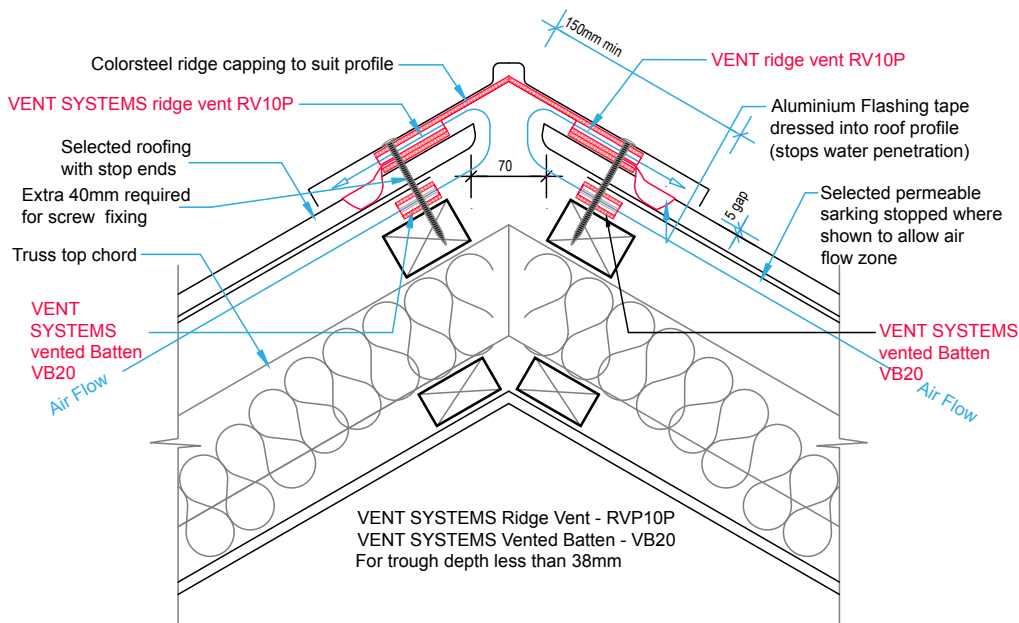
# VENT SYSTEMS VENTILATED CAVITY BATTEN VB20 ROOF

PRODUCT INFORMATION SHEET

**Fig C: Renovation Detail - Sarking above the roof batten**

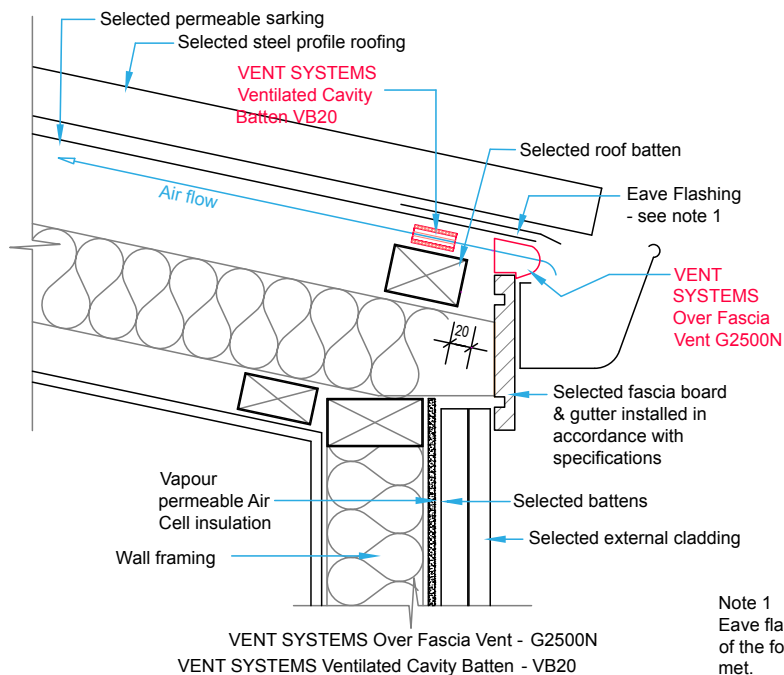


**Fig D: Cathedral Roof Detail - Sarking above the roofing batten**



# VENT SYSTEMS VENTILATED CAVITY BATTEN VB20 ROOF

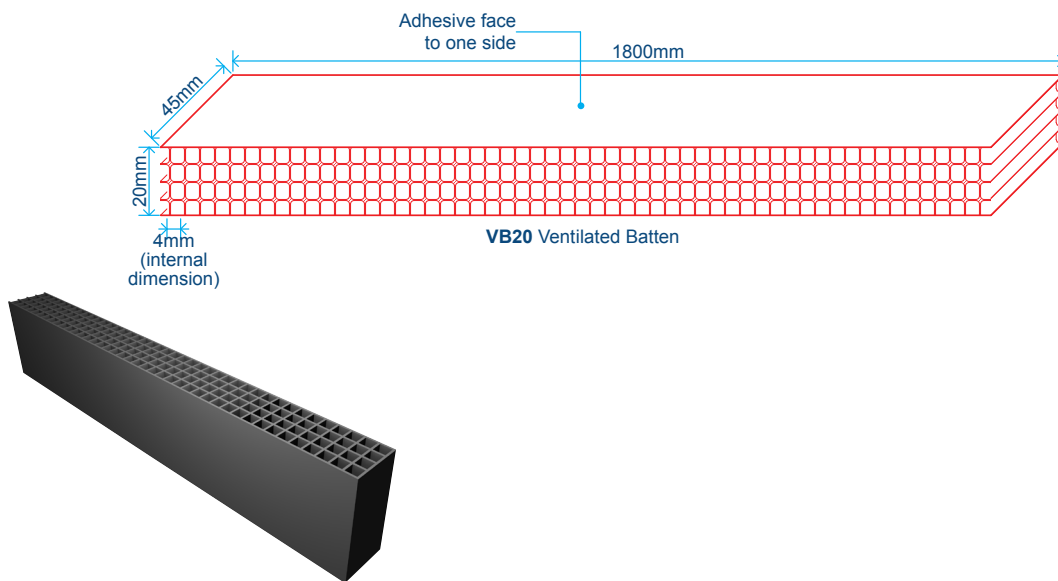
**Fig E: Cathedral Roof Detail - Sarking above the roof batten**



Note 1  
Eave flashing required where all of the following conditions are met.

- Roof pitch less than 10°
- Soffit width less than or equal to 100mm
- Wind zone is Very High or greater

**Fig F: Dimensions**



The company maintains a policy of continuous development of its product range and reserves the right to amend the specification without notice.

**NOTE:** Diagrams are for guidance purposes only. This is a suggested method of ventilation but the overall design and dimensions are the responsibility of the designer in compliance with the NCC, individual state requirements and AS3959 in bush fire prone areas.